

EXPANSION ANNUNCIATOR PANEL



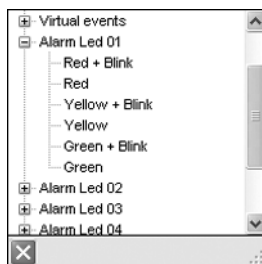
- 16 configurable LEDs
- 3 colour LEDs
- 8 configurable push-buttons
- PC software configuration
- 12/24 VDC Power Supply

DESCRIPTION

Front panel mount, the **EAP 300** provides additional visible annunciation LEDs and Inputs for use with the MEC 310 or MEC 320 controllers. It is developed specifically for those end users, who prefer lamp indications instead of display text messages. The **EAP 300** communicates with the controllers via proprietary CANbus industrial protocol utilizing a 2 wire shielded cable.

The **EAP 300** input and output points are configured using the same TPS 300 software used to configure the MEC 310 and 320 controllers. All LEDs can be configured for both alarm and function indication. The LED colour is also configurable (green, red or yellow).

EXAMPLE



- Red could be used for alarm indication
- Green could be used for 'OK' indication
- Yellow could be used for status of different sequences

The push-buttons are also fully configurable and can be used for a multitude of functional purposes.

MODEL CODE

EAP300-12V-S for 12 VDC systems

EAP300-24V-S for 24 VDC systems

NOTE: Specifications subject to change without notice.

CL069 Rev0 08/07/15

6263Z-SK-7/08-2K-TP